

Superior Trail Race

“Oberg” Aid Station Traffic Control & Parking Plan

Aid Station:

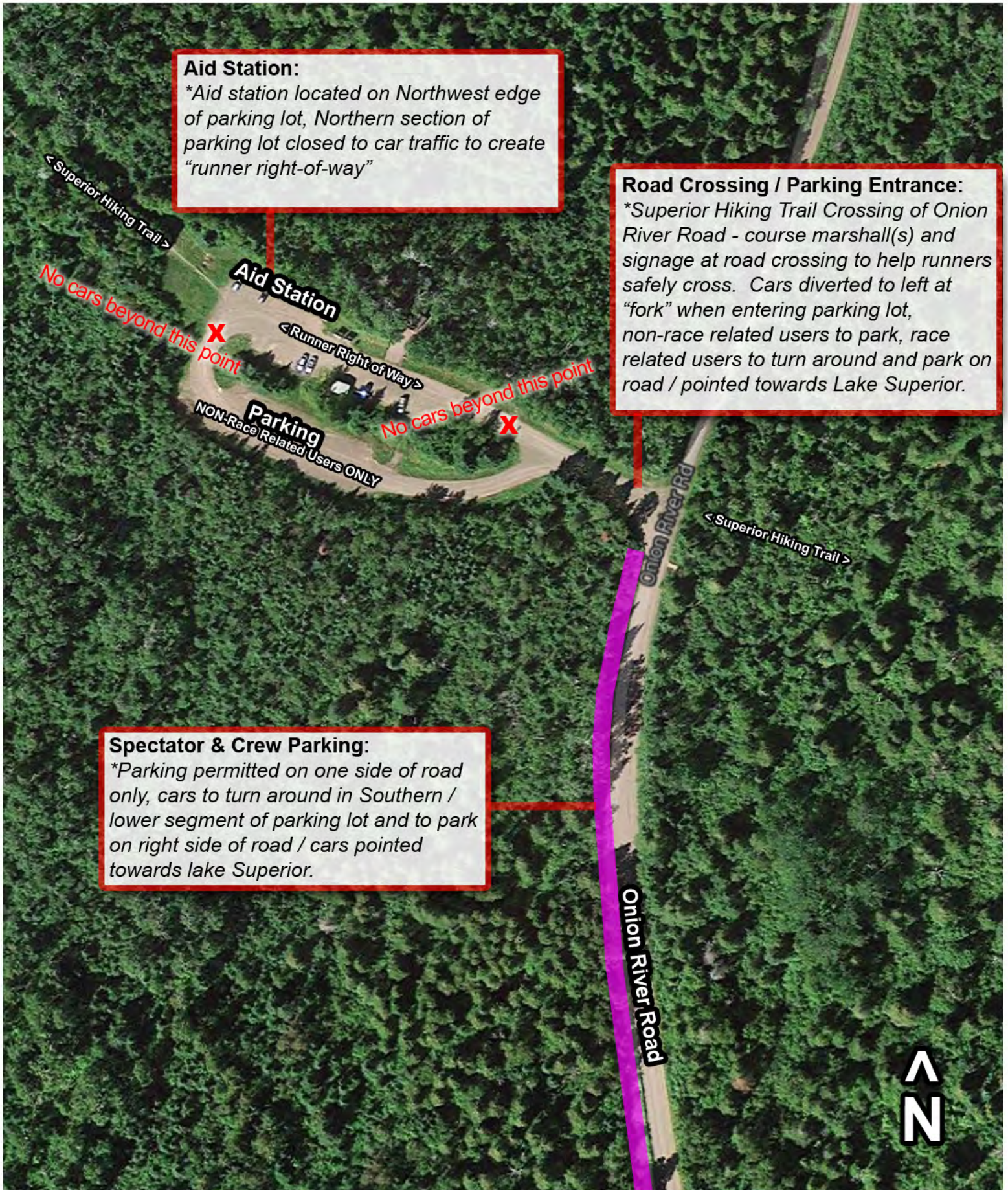
*Aid station located on Northwest edge of parking lot, Northern section of parking lot closed to car traffic to create “runner right-of-way”

Road Crossing / Parking Entrance:

*Superior Hiking Trail Crossing of Onion River Road - course marshal(s) and signage at road crossing to help runners safely cross. Cars diverted to left at “fork” when entering parking lot, non-race related users to park, race related users to turn around and park on road / pointed towards Lake Superior.

Spectator & Crew Parking:

*Parking permitted on one side of road only, cars to turn around in Southern / lower segment of parking lot and to park on right side of road / cars pointed towards lake Superior.



Superior Trail Race

“Sawbill-Britton Peak” Aid Station Traffic Control & Parking Plan

