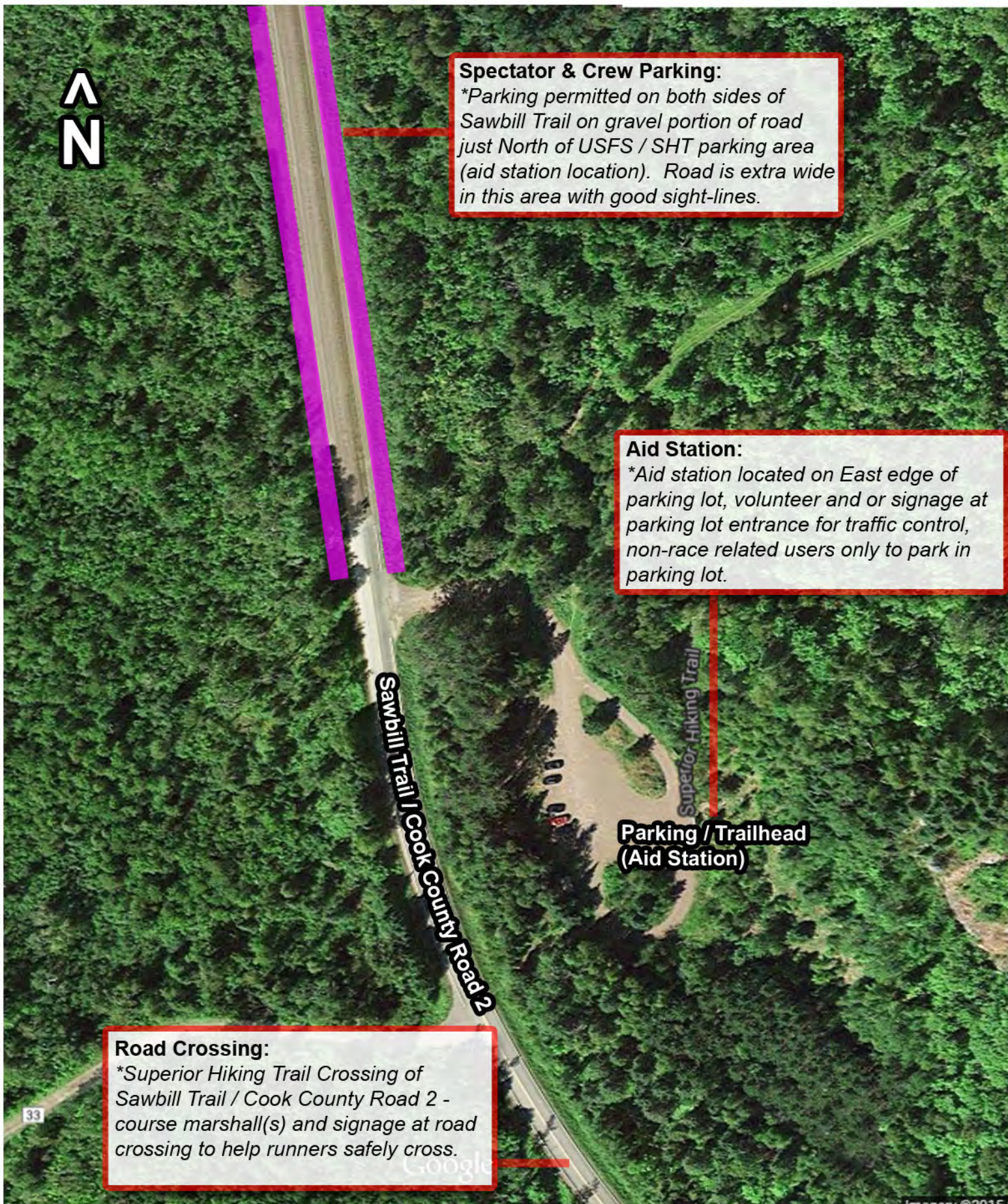


Superior Trail Race

"Sawbill-Britton Peak" Aid Station Traffic Control & Parking Plan



Spectator & Crew Parking:

**Parking permitted on both sides of Sawbill Trail on gravel portion of road just North of USFS / SHT parking area (aid station location). Road is extra wide in this area with good sight-lines.*

Aid Station:

**Aid station located on East edge of parking lot, volunteer and or signage at parking lot entrance for traffic control, non-race related users only to park in parking lot.*

Sawbill Trail / Cook County Road 2

Superior Hiking Trail

Parking / Trailhead (Aid Station)

Road Crossing:

**Superior Hiking Trail Crossing of Sawbill Trail / Cook County Road 2 - course marshall(s) and signage at road crossing to help runners safely cross.*

33

Google

Imagery ©2015

Superior Trail Race

“Oberg” Aid Station Traffic Control & Parking Plan

Aid Station:

*Aid station located on Northwest edge of parking lot, Northern section of parking lot closed to car traffic to create “runner right-of-way” - race volunteers to park in those spots ahead of time.

Road Crossing / Parking Entrance:

*Superior Hiking Trail Crossing of Onion River Road - course marshal(s) and signage at road crossing to help runners safely cross. Cars diverted to left at “fork” when entering parking lot, non-race related users to park, race related users to turn around and park on road / pointed towards Lake Superior.

Spectator & Crew Parking:

*Parking permitted on one side of road only, cars to turn around in Southern / lower segment of parking lot and to park on right side of road / cars pointed towards lake Superior.

